

KMK 138

BLUETOOTH OPTICAL PROBE

SMART BLUETOOTH OPTICAL PROBE

INFO@PROBEFORMETERS.COM

PROBEFORMETERS.COM



SMART
BLUETOOTH
OPTICAL
PROBE

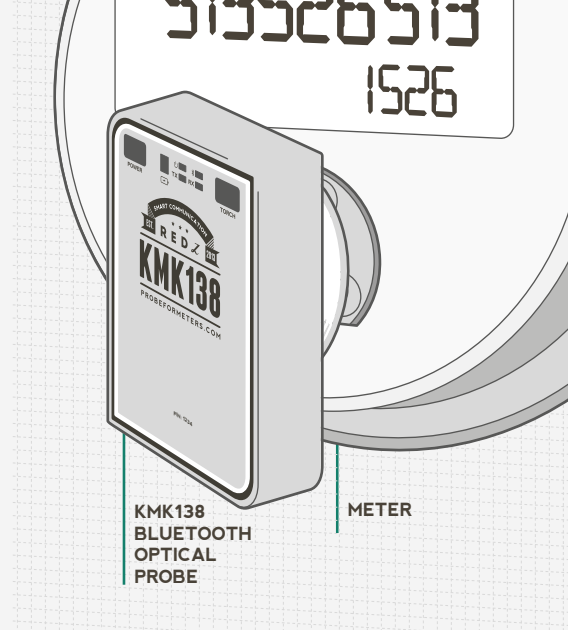
DIFFERENT
WORKING
MODES



REDZ KMK138 optical probe is designed in ANSI C12.18 Type 2 standard and it is compatible with all brands and types of ANSI meters.

The probe has wireless Bluetooth connection thus it can easily be used with any Android or Windows based device with Bluetooth connection support.

The probe can be used with constant baud rate and data types on meter side as well as in different operating modes such as command mode. The firmware also can easily be changed over Bluetooth.



MECHANICAL SPECIFICATIONS

Diameter:	32 mm	Body and Back Cover Material:	ABS
Width:	~ 40 mm	Transparent Parts:	Transparent Poly Carbonate
Height:	~ 55 mm	Weight:	~ 70 gr
Depth:	~ 25 mm		
Magnetic Force:	N38		

TORCH FEATURE

Torch LED:	3 mm White LED
------------	----------------

PROBE SPECIFICATIONS

Standard:	ANSI C12.18 Type 2	Operating Voltage:	3,3 V (Rechargeable battery powered through micro USB)
Data Communication Speed:	Max 38400 baud	Wavelength:	~ 900 nm
		Receiver Sensitivity:	Programmatically changeable on Command Mode

BLUETOOTH SPECIFICATIONS

Standard:	Ver. 2.0 + EDR compliant, Max. 4 dBm (Class2)	LEDs	Charge, Power, BT Link, TX, RX
Operating Modes:	<ul style="list-style-type: none"> 4800 baud 8N1 fixed 9600 baud 8N1 fixed 28800 baud 8N1 fixed Command mode etc. Operating modes can be changed instantly by easily upload firmware over Bluetooth connection	Battery:	600 mAh rechargeable battery powered. Battery can be charged over Micro USB connector
Operating Hours:	~ 10 hours (more than 2200 nonstop readings)	Operating Distance:	Max 15 meters